

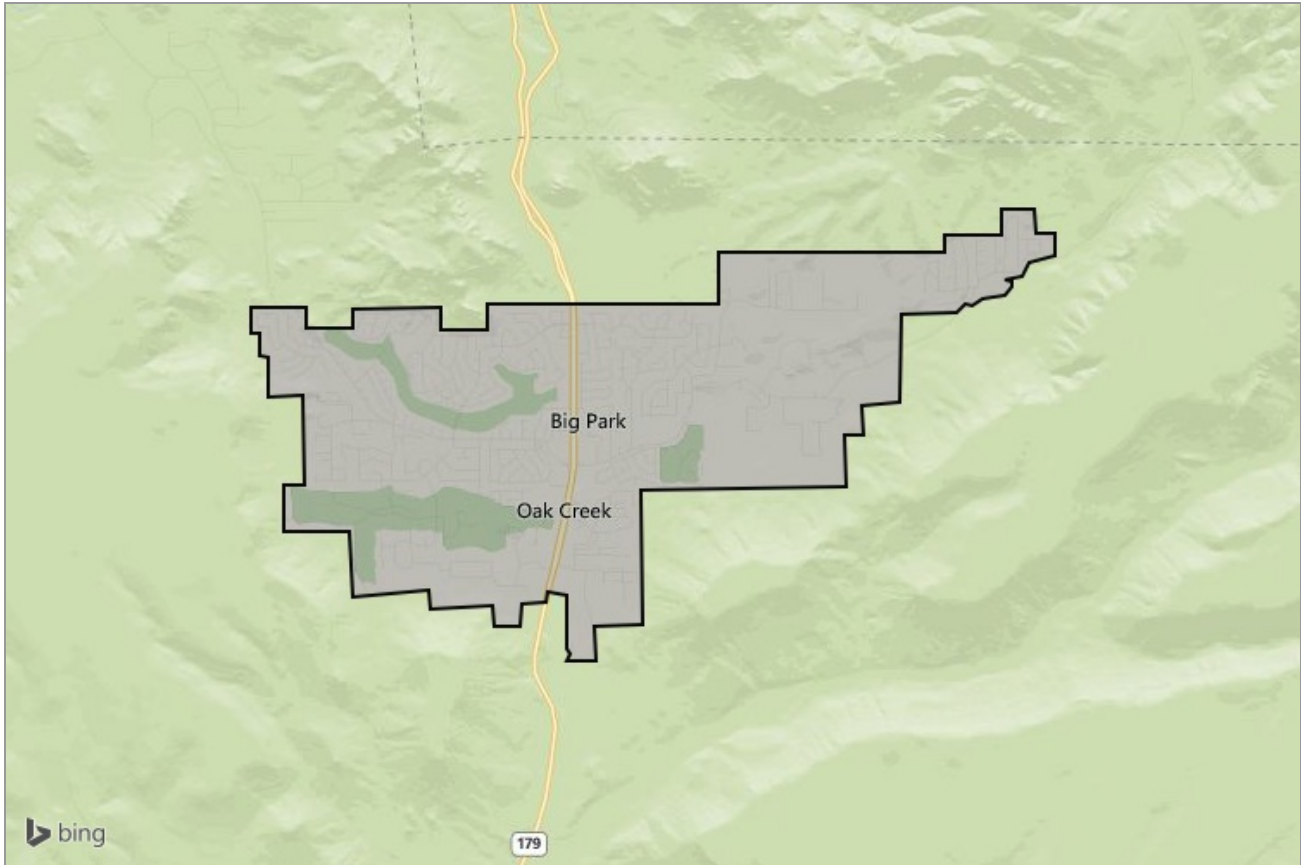


Russ  
Lyon

Sotheby's  
INTERNATIONAL REALTY

NEIGHBORHOOD REPORT

# Village of Oak Creek, Arizona



Russ  
Lyon

Sotheby's  
INTERNATIONAL REALTY



# Neighborhood: Housing Stats and Charts

|  | Village of Oak Creek | Yavapai County | Arizona | USA    |
|--|----------------------|----------------|---------|--------|
| <b>Median Estimated Home Value</b>                             | \$315K               | \$216K         | \$196K  | \$319K |
| <b>Estimated Home Value 12-Month Change</b>                    | –                    | 8.6%           | 8.1%    | –      |
| <b>Median List Price</b>                                       | –                    | \$220K         | \$235K  | \$99K  |
| <b>List Price 1-Month Change</b>                               | –                    | 2.3%           | –0.4%   | 0.2%   |
| <b>List Price 12-Month Change</b>                              | –                    | 12.8%          | 6.8%    | 2.6%   |
| <b>Median Home Age</b>   | 25                   | 26             | 28      | –      |
| <b>Own</b>   | 71%                  | 70%            | 63%     | 64%    |
| <b>Rent</b>  | 29%                  | 30%            | 37%     | 36%    |
| <b>\$ Value of All Buildings for which Permits Were Issued</b> | –                    | \$64.1M        | \$2.42B | \$102B |
| <b>% Change in Permits for All Buildings</b>                   | –                    | –32%           | –16%    | 2%     |
| <b>% Change in \$ Value for All Buildings</b>                  | –                    | –28%           | –11%    | 7%     |

# Neighborhood: People Stats and Charts

|                              | Village of Oak Creek | Yavapai County | Arizona | USA   |
|------------------------------|----------------------|----------------|---------|-------|
| Population                   | 6.34K                | 214K           | 6.56M   | 314M  |
| Population Density per Sq Mi | 1.21K                | 26.3           | 57.8    | —     |
| Population Change since 2000 | —                    | 27.6%          | 27.9%   | 11.6% |
| Median Age                   | 63                   | 51             | 37      | 37    |
| Male / Female Ratio          | 46%                  | 49%            | 50%     | 49%   |
| High School Graduate         | 20%                  | 26%            | 25%     | 28%   |
| 2-Year Degree                | 31%                  | 39%            | 34%     | 29%   |
| Bachelor Degree              | 33%                  | 16%            | 17%     | 18%   |
| Post-graduate Degree         | 11%                  | 9%             | 10%     | 11%   |

## Population of Children by Age Group

This chart shows the distribution of the population of children by age range — from birth to 17 — in the area of your search.

Data Source: U.S. Census

Update Frequency: Annually

Village of Oak Creek



## Population of Adults by Age Group

This chart shows the distribution of the population of adults by age range — from 18 to 75-plus — in the area of your search.

Data Source: U.S. Census

Update Frequency: Annually

Village of Oak Creek



## Households With Children

This chart shows the distribution of households with children, categorized by marital status, in the area of your search.

Data Source: U.S. Census

Update Frequency: Annually

Village of Oak Creek



### Household Income Brackets

This chart shows annual household income levels within an area.

Data Source: U.S. Census

Update Frequency: Annually

Village of Oak Creek



### Presidential Voting Pattern

This chart shows how residents of a county voted in the 2014 presidential election.

Data Source: USElectionAtlas.org

Update Frequency: Annually



# Neighborhood: Economic Stats and Charts

|                                | Village of Oak Creek | Yavapai County | Arizona  | USA      |
|--------------------------------|----------------------|----------------|----------|----------|
| <b>Income Per Capita</b>       | \$35,477             | \$25,068       | \$25,537 | \$28,555 |
| <b>Median Household Income</b> | \$55,357             | \$44,000       | \$49,928 | \$53,482 |
| <b>Unemployment Rate</b>       | —                    | 4.8%           | 5.5%     | 4.7%     |
| <b>Unemployment Number</b>     | —                    | 4.86K          | 177K     | 7.44M    |
| <b>Employment Number</b>       | —                    | 96.2K          | 3.05M    | 151M     |
| <b>Labor Force Number</b>      | —                    | 101K           | 3.23M    | 158M     |

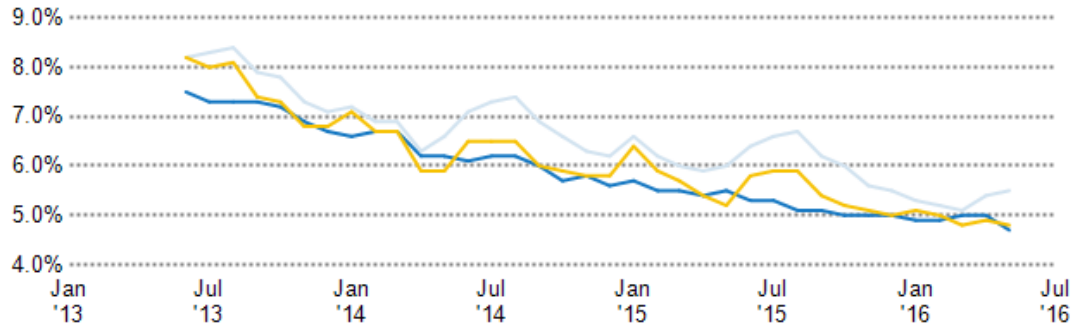
## Unemployment Rate

This chart shows the unemployment trend in the area of your search. The unemployment rate is an important driver behind the housing market.

Data Source: Bureau of Labor Statistics

Update Frequency: Monthly

- Yavapai County
- Arizona
- USA



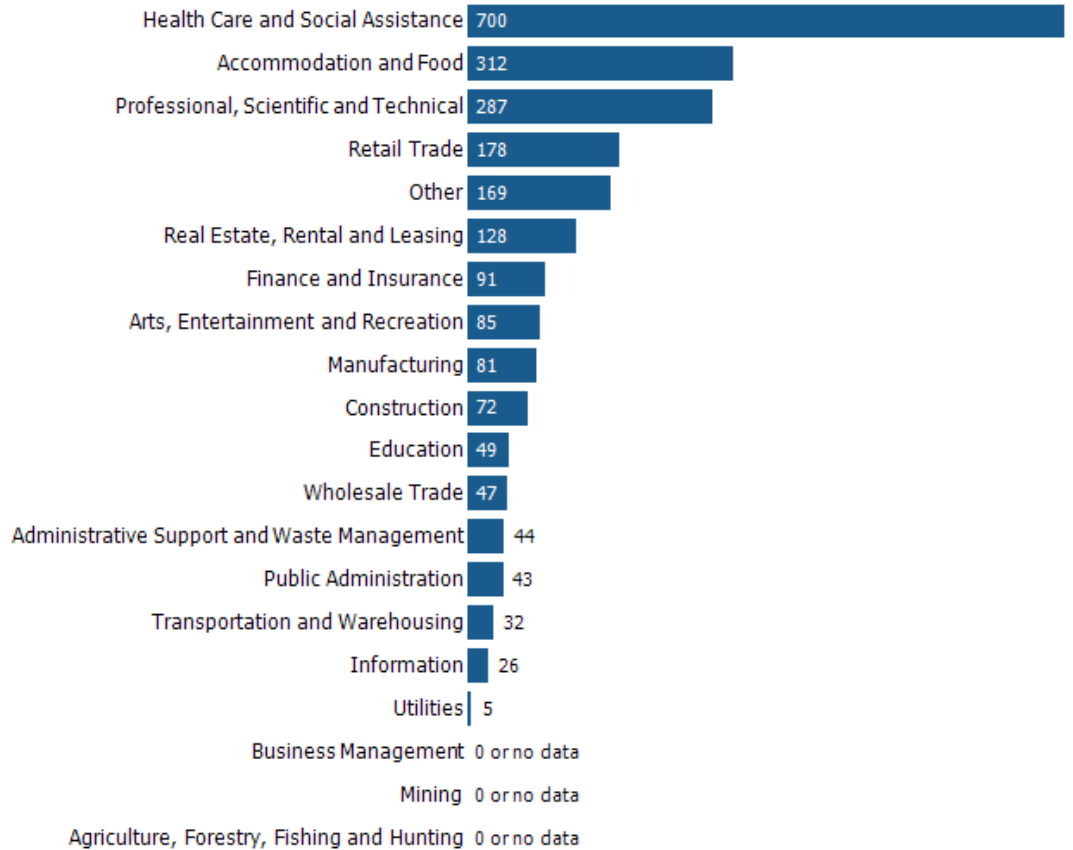
## Occupational Categories

This chart shows categories of employment within an area.

Data Source: U.S. Census

Update Frequency: Annually

- Village of Oak Creek



# Neighborhood: Quality of Life Stats and Charts

Quality of Life in –

|  | Village of Oak Creek | Yavapai County | Arizona | USA   |
|--|----------------------|----------------|---------|-------|
| Elevation (in feet)                              | 4,674                | 4,469          | –       | –     |
| Annual Rainfall (in inches)                      | 16.09                | 16.81          | 13.12   | –     |
| Annual Snowfall (in inches)                      | 5                    | 9.61           | 13.11   | –     |
| Days of Full Sun (per year)                      | 165                  | 170            | 172     | –     |
| Travel Time to Work (in minutes)                 | 24                   | 23             | 25      | 26    |
| Water Quality - Health Violations                | –                    | 0              | –       | –     |
| Water Quality - Monitoring and Report Violations | –                    | 1              | –       | –     |
| Superfund Sites                                  | 0                    | 2              | 15      | 2,302 |
| Brownfield Sites                                 | No                   | Yes            | Yes     | Yes   |

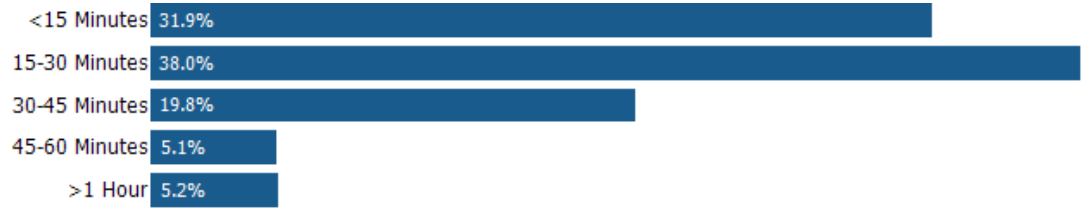
## Average Commute Time

This chart shows average commute times to work, in minutes, by percentage of an area's population.

Data Source: U.S. Census

Update Frequency: Annually

Village of Oak Creek



## How People Get to Work

This chart shows the types of transportation that residents of the area you searched use for their commute.

Data Source: U.S. Census

Update Frequency: Annually

